

■ **Clinical commentary**

Epileptic Disord 2021; 23 (2): 412-418

Epileptic
Disorders

Chapeau de gendarme in a toddler points to focal epilepsy originating from the subcentral gyrus

Christina T. Rüsç, Bigna K. Bölsterli, Carlotta Carosio, Georgia Ramantani

Department of Neuropediatrics,
University Children's Hospital
Zurich, Switzerland

Epileptic
Disorders

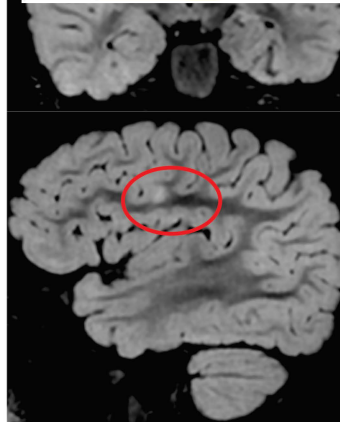
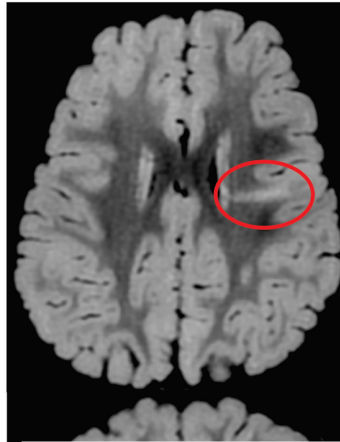
“Chapeau de gendarme” in a toddler points to focal epilepsy originating from the subcentral gyrus

- The “chapeau de gendarme” sign or ictal pouting has been associated with focal epilepsy of frontal origin, mainly in adult epilepsy surgery series.
- This is the youngest reported patient with a “chapeau de gendarme” sign as the sole initial manifestation of left frontal lobe epilepsy.
- We propose considering the “chapeau de gendarme” sign as a hallmark of focal epilepsy in all age groups, including early life, and to timely initiate a presurgical evaluation in patients with refractory seizures.

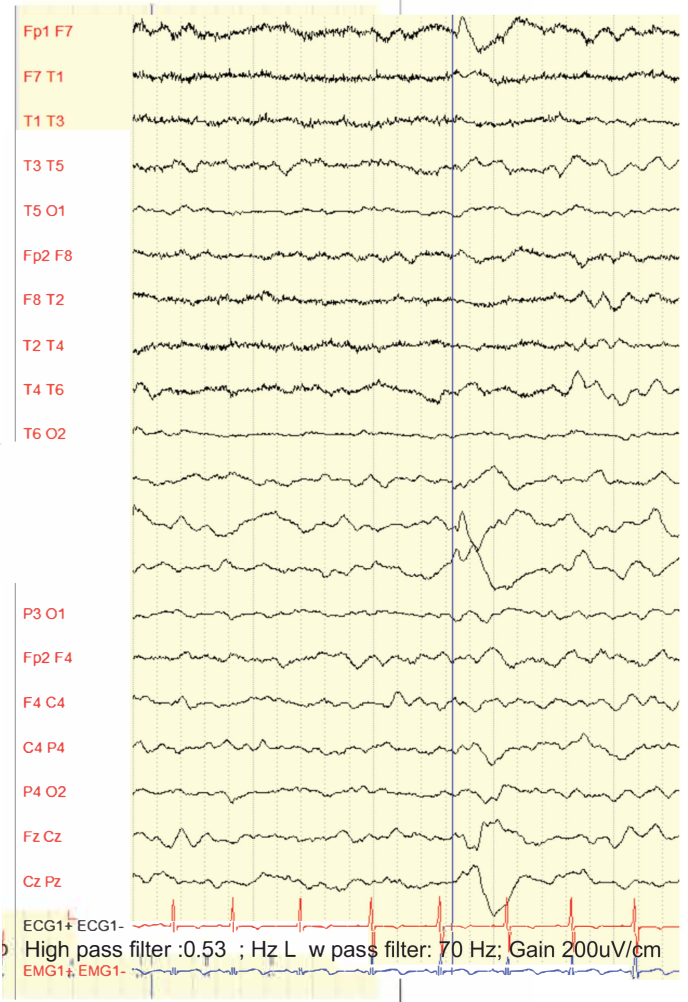
A. SEIZURE SEMIOLOGY



B. BRAIN MRI



C. INTERICTAL EEG FINDINGS



C. ICTAL EEG FINDINGS AT SEIZURE ONSET

